

Data Sheet

Double lifetime wheel.

Infini-Forge

moveero

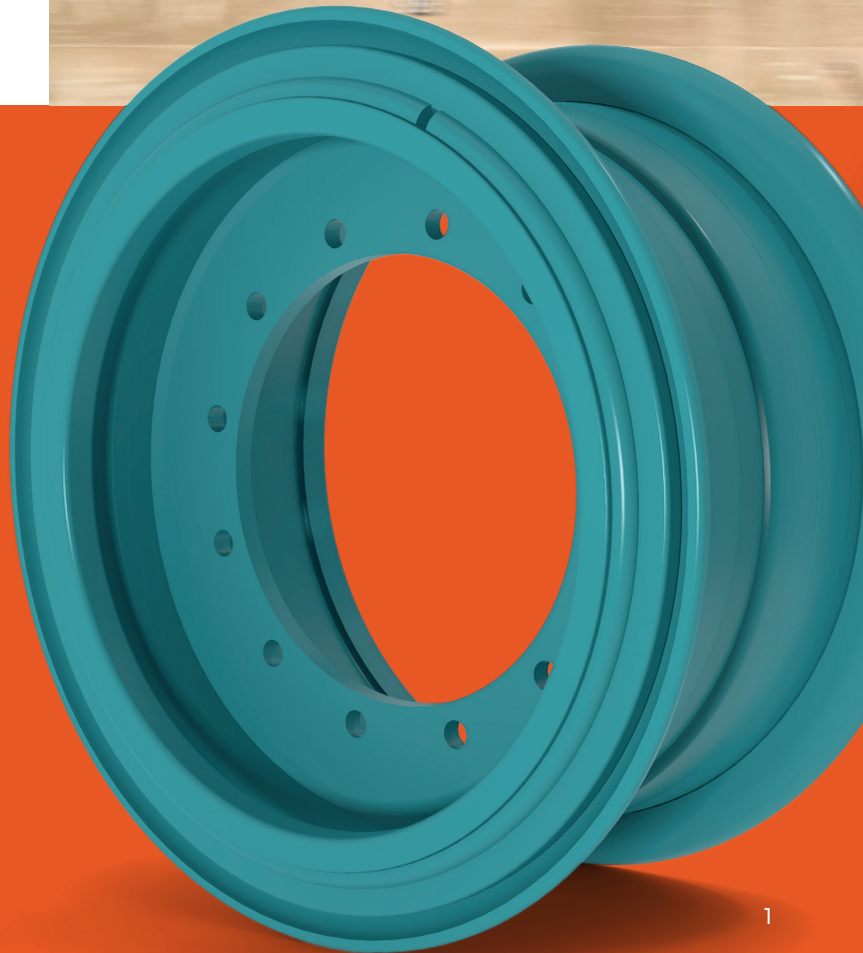
A high performing, patented solution for vehicles operating in safety critical, demanding situations requiring durability and stability. Infini-Forge was developed as a result of major advances in process technology, allowing wheels to be manufactured through a hot induction forming (HIF) process. This enabled our engineers to produce wheels specifically for high load-bearing vehicles and high-pressure tyres, with the wheels achieving **double the life time** as conventionally manufactured, multi piece wheels.

As part of the development process, the moveero R&D team have subjected the wheel to rigorous on- and off-site testing with several manufacturers, operating laden and unladen vehicles over extensive periods of time.



Highlights

- Patented design solution.
- Typical applications include underground mining vehicles and mobile cranes, as well as airport tow/tug tractors and AGVs.
- Manufactured through a hot induction forming (HIF) process, specifically for high loadbearing vehicles and high-pressure tires, with wheels achieving a lifespan 50% longer than conventionally manufactured, multi-piece wheels.
- The main contact areas machined at the end of the process, a 100% round wheel with perfect stress distribution is guaranteed.
- Capable of withstanding high loads and with improved life-expectancy, the wheel is a great solution for high-load and safety-critical applications, translating directly into increased durability and vehicle up-time.

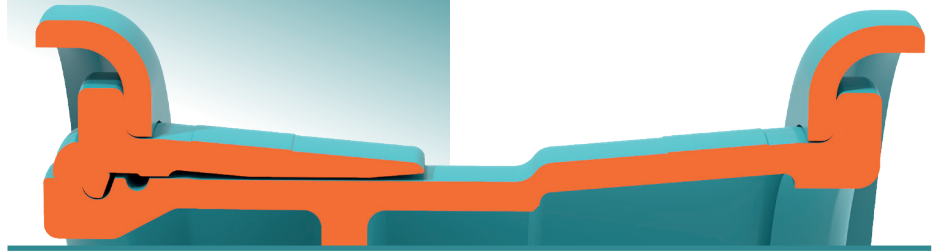


The revolutionary and patented Infini-Forge process achieves exceptional manufacturing accuracy, allowing material to be placed where it is needed (and taken out where it is not), leading to an increase in rim strength. And with the main contact areas machined at the end of the process, a 100% round wheel with perfect stress distribution is guaranteed. The process also means that the contact points between the wheel and tire bead are perfectly smooth, with the rim design featuring extended flanges to further protect the tyre.

Infini-Forge wheels can withstand high loads and provide improved life-expectancy. Tested and verified the Infini-Forge wheel is a great solution for high-load and safety-critical applications, with its benefits translating directly into increased durability and therefore vehicle up-time.

Lower stress is achieved in all relevant areas vs. a standard rim.

The Solution – FEA, field stress measurements before and after the changes.



For more information or to discuss your own specific requirements, contact us on sales@moveero.com

Further information about Infini-Forge and our other products can be found at www.moveero.com